

with a lower net negative charge yield diffuse zones on the ionograms, but dextran, which exhibits only a very low electrophoretic mobility in free solution, gave a sharp band.

*Department of Biochemistry,  
The Graduate School and Stritch School of Medicine, Loyola University,  
Chicago, Ill. (U.S.A.)*

EDWARD W. BERMES, Jr.  
HUGH J. McDONALD

<sup>1</sup> H. J. McDONALD, R. J. LAPPE, E. P. MARBACH, R. H. SPITZER AND M. C. URBIN, *Ionography: Electrophoresis in Stabilized Media*, Year Book Publishers, Chicago, Ill., 1955.

Received February 21st, 1956

## Elution apparatus for quantitative paper chromatography

In the course of recent studies on plasma corticosteroids it was necessary quantitatively to elute large numbers of paper strips  $7 \times 1.5$  cm in a minimal volume of solvent. The apparatus illustrated greatly facilitated the procedure.

In place of micropipettes, 1.5 mm bore glass capillary tubing was used to collect the eluate, one end being bent up at a right angle and flared to receive the end of the paper; each tube was calibrated at 0.1 and 0.2 ml.

The tank and inner trough are constructed in stainless steel\*. The trough is mounted on a screw at each end, by means of which its height is adjusted to accommodate strips of different lengths. The slope of the tubes may be varied; they are attached by clips to short sections of steel tubing mounted on a 5 mm rod, and these may be rotated on the rod by slackening a fixing screw.

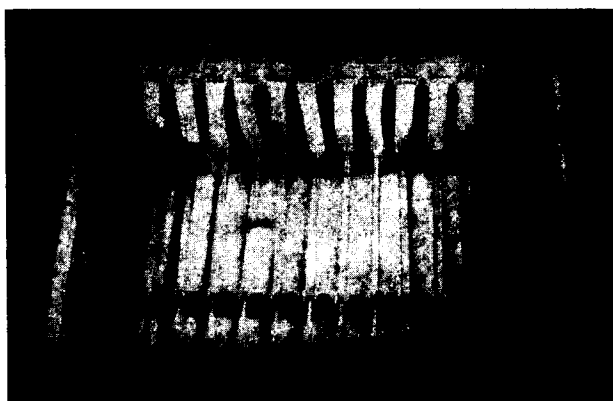


Fig. 1.

Papers are held between a single thin glass sheet below and small rectangles of 7 mm glass plate above. The tank is covered by a glass lid which rests on a sponge-rubber rim.

The bottom of the tank is covered with the eluting solvent, and after inserting the papers the trough is half filled with solvent; it is unnecessary to await equilibration.

Using this procedure 2  $\mu$ g cortisol was eluted into 0.05 ml absolute ethanol without detectable loss in ten recovery experiments.

*Department of Physiology, University of Cape Town (South Africa)*

BARRY LEWIS

Received February 21st, 1956

\* The stainless steel apparatus was constructed by the Marks Engineering Works Association, Capetown.